



OFF-GRID
SOLAR
SYSTEM

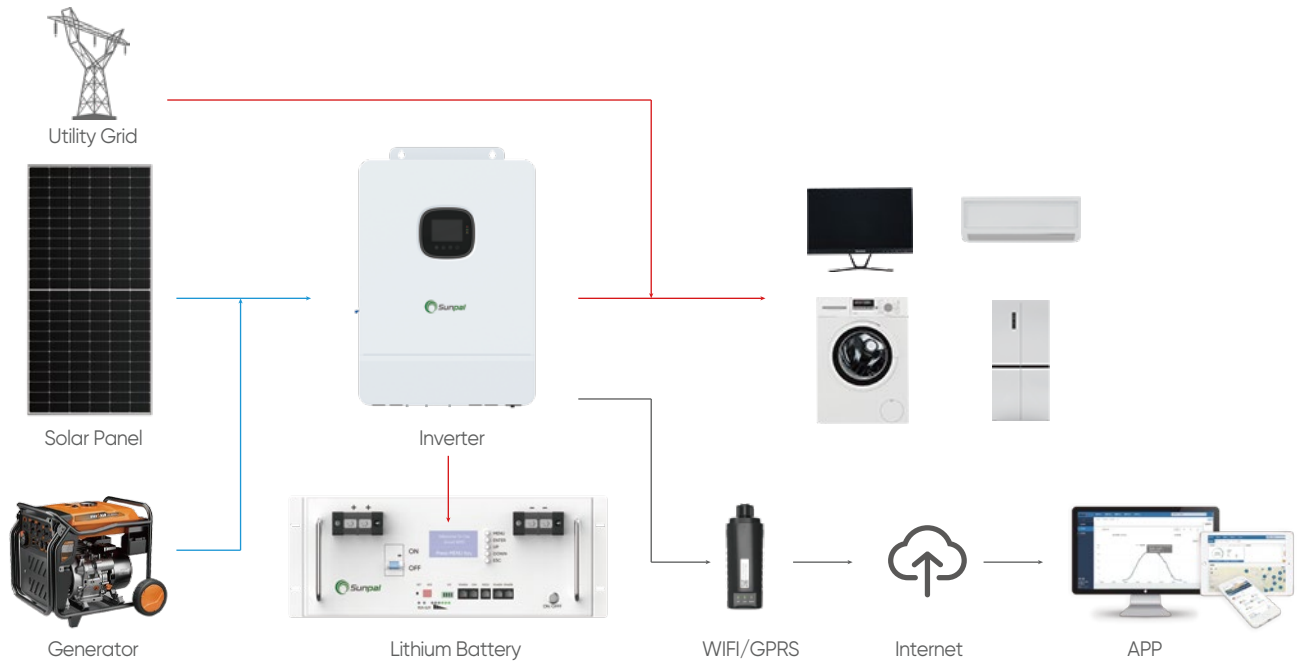
Off Grid Solar System

US Voltage

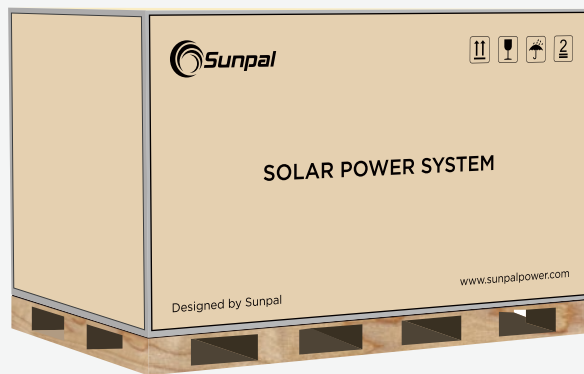
SP-10KW2-OFF

SP-10KW2-OFF

(Residential Off Grid Solar System)



SOLAR SYSTEM KIT



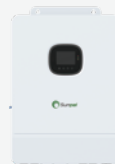
Solar Panel



Lithium Battery



Solar Inverter



Wifi Monitor



PV Cable



MC4 Connector



Mounting Bracket



DC Switch/AC Switch(Optional)



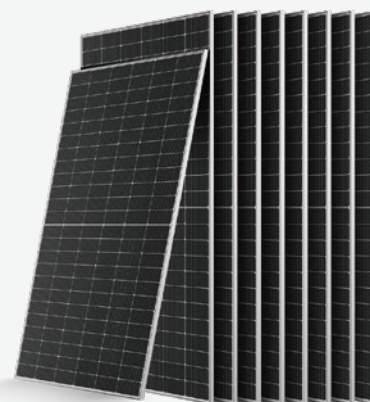
PV Module

- Positive power tolerance (0~+5W) guaranteed
- Reduced resistive loss with lower operating current
- Higher energy yield with lower operating current
- Reduced hot spot risk with optimized electrical design and lower operating current

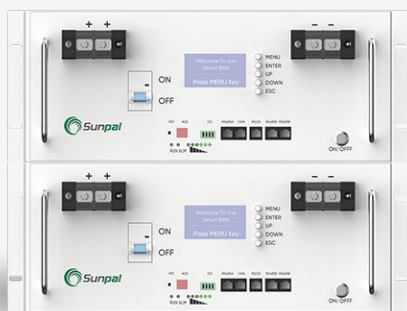
Parameter	
Testing Condition	STC
Maximum Power(Pmax/W)	560W
Open Circuit Voltage(Voc/V)	49.84
Short Circuit Current(Isc/A)	14.14
Voltage at Maximum Power(Vmp/V)	41.08
Current at Maximum Power(Impp/A)	13.64
Module Efficiency(%)	21.67

560w

Mono-crystalline Silicon Solar Panel



Lithium Battery



48V 200Ah

Rack-Mounted
LiFePO4 Battery

- High Specific Energy
- Support Parallel Operation
- Easy Installation
- Long Cycle Life

Parameter	
Nominal Capacity	200Ah
Nominal Voltage	48V
Max.Charging Current	100A
Max.Discharging Current	100A

Inverter

- Advanced MPPT with up to 99.9% efficiency
- Up to 6 units in parallel connection
- Easy to install and simple to use
- Supports Li-ion battery BMS communication

Parameter	
Rated Output Power	10000W
Rated Output Voltage/Frequency	120Vac/240Vac, 50Hz/60Hz
No. of MPPT	2
MPPT Voltage Range	120-450Vdc
Battery Type	Lead-acid/Li-ion/User defined
Rated Battery Voltage	40~60Vdc

SPI-10K-UP

Inverter





Solar
Systems

Sunpal Power Co., Ltd.

Add: NO.398 Ganquan Road, Hefei, China

Tel: +86 551 6586 5992

Email: info@sunpalpower.com

Web: www.sunpal-energy.com